



# FULL DC INVERTER SYSTEMS

OPERATION MANUAL

**MODBUS GATEWAY CCM18**

COMMERCIAL AIR CONDITIONERS SDV4





# Contents

Safety precautions.....	1
Overview .....	2
Usage introduction.....	4
Software reset .....	12
appendix: 《mapping table》 .....	12



# 1. Safety precautions

The following contents are stated on the product and the operation manual, including usage, precautions against personal harm and property loss, and the methods of using the product correctly and safely. After fully understanding the following contents (identifiers and icons), read the text body and observe the following rules.


## ■ Identifier description


Identifier	Meaning
 <b>Warning</b>	Means improper handling may lead to personal death or severe injury.
 <b>Caution</b>	Means improper handling may lead to personal injury or property loss.
<p>[Note]: 1. "Harm" means injury, burn and electric shock which need long-term treatment but need no hospitalization                  2. "Property loss" means loss of properties and materials.</p>	

## ■ Icon description

Icon	Meaning
	It indicates forbidding. The forbidden subject-matter is indicated in the icon or by images or characters aside.
	It indicates compulsory implementation. The compulsory subject-matter is indicated in the icon or by images or characters aside.

## Warning

 <b>Warning</b>	Delegate installation	Please entrust the distributor or professionals to install the unit. The installers must have the relevant know-how. Improper installation performed by the user without permission may cause fire, electric, shock, personal injury or water leakage.
---	-----------------------	--

 <b>Usage Warning</b>	Forbid	Do not spray flammable aerosol to it directly. Otherwise, fire may occur.
	Forbid	Do not operate with wet hands or let water enter it. Otherwise, electric shock may occur.

## 2 Overview

### 2.1 Instruction

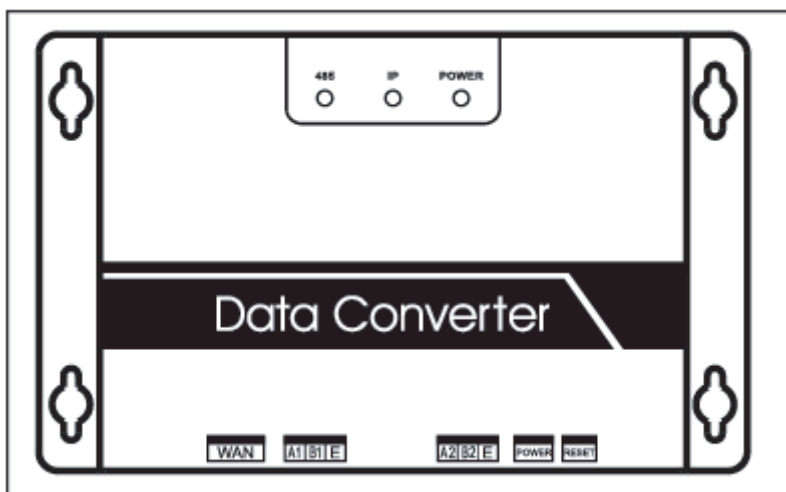


Fig.2.1

WAN terminal: Connect to the switch by 5 kinds of network cables to ensure that PC can access to the web page of it.

A1B1E terminal: Connect to the indoor/outdoor unit

A2B2E terminal: Connect to the terminal serial port.

### 2.2 System Architecture Description

It supports two kinds of outdoor unit with baud rates of 600 and 4800. (For detailed information, please contact our technical support). The addresses of accessed indoor/outdoor units can't repeat.

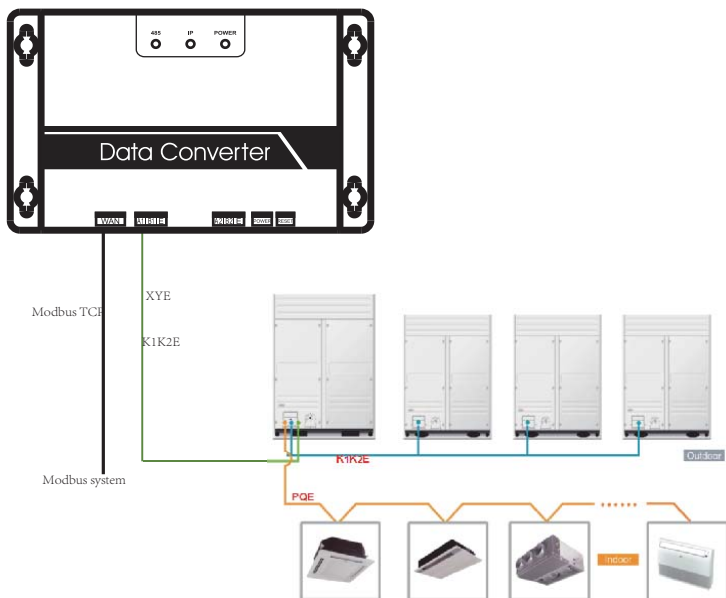
1) When the baud rate of the outdoor unit is 600, 64 indoor units and 4 outdoor units can connect to it at most.

2) When the baud rate of the outdoor unit is 4800, 60 indoor (with the address from 4—63) units and 4 outdoor units can connect to it at most.

The upper computer system with Modbus protocol access to terminal A2B2E by RTU or by TCP to connect to modbus gateway. See the connection figure between modbus gateway and air-conditioner system below:

Connection through Modbus TCP:

Note: XYE port and K1K2E port connect hand in hand, and then access to A1B1E port.



Connection through Modbus RTU:

Fig.2.2

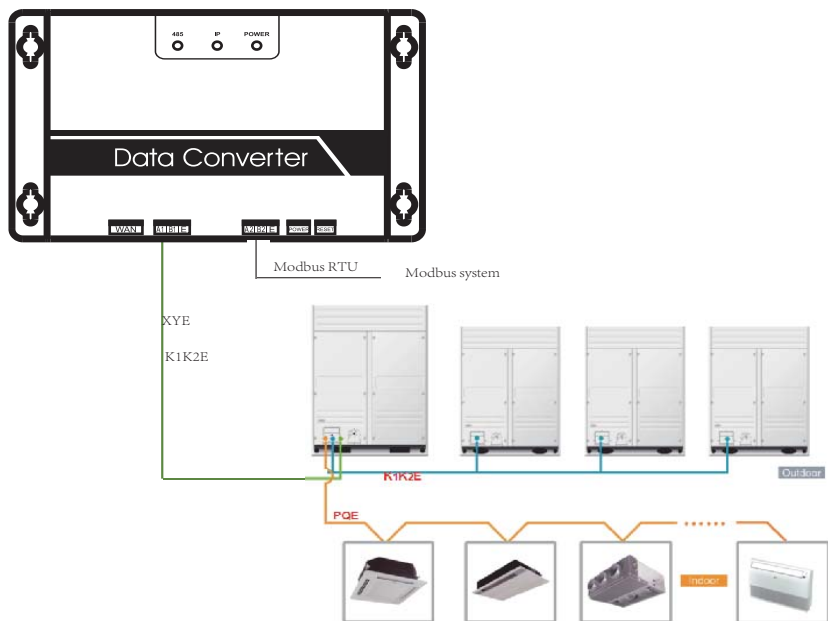


Fig.2.3

## 2.3 Function Code

Function code	Function name	Function
0x01	Read Coils	Read
0x04	Read Input Register	Read
0x10	Write Holding Register	Write

## 2.4 Abnormal Reply

The master unit sends requests and waits for reply from the slave. When there's no error occurs, the slave will reply normally, but when there's data checking error, the slave won't answer. When the master unit sends wrong data (except for checking error), the slave will answer abnormally.

Code	Name	Meaning
0x 01	Illegal function code	Function code received by the slave can't be executed.
0x02	Illegal data address	The received data address is not allowed.
0x03	Illegal data	Value in query data field is not allowed by the slave
0x06	Slave busy	The slave is busy with a long-time program command. Ask the master to send messages when the slave is free.

## 3 Usage Introduction

### 3.1 IP Configuration

The default IP address is 192.168.1.200 when modbus gateway leaves the factory. The PC used for visiting websites must be in the same subnet segment with modbus gateway, which means it should be 192.168.1.xx (xx is from 2 to 254). There are 2 ways to configure IP: static configuration and multi-IP addition

#### 3.1.1 Single IP Configuration

Open protocol dialog, configure the IP address and subnet mask, for example: IP: 192.168.1.211, subnet mask 255.255.255.0

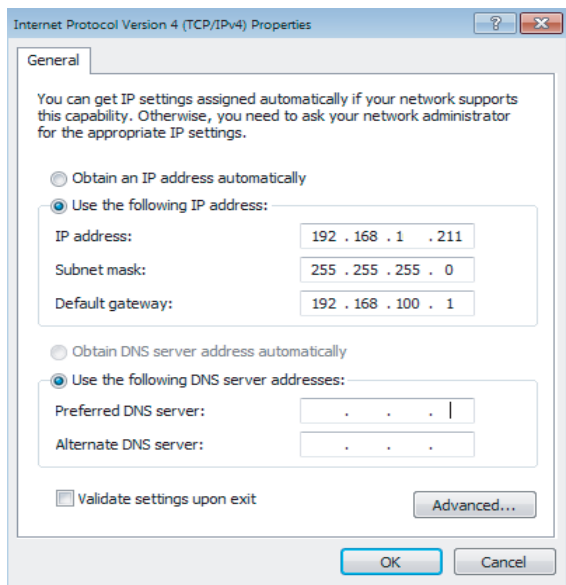


Fig.3.1

After setting, click "OK" button.

### 3.1.2 Multi-IP Addition

Configure a static IP address before adding multiple IP.

Open protocol dialog and choose Advanced tab. TCP/IP setting dialog will display like below:

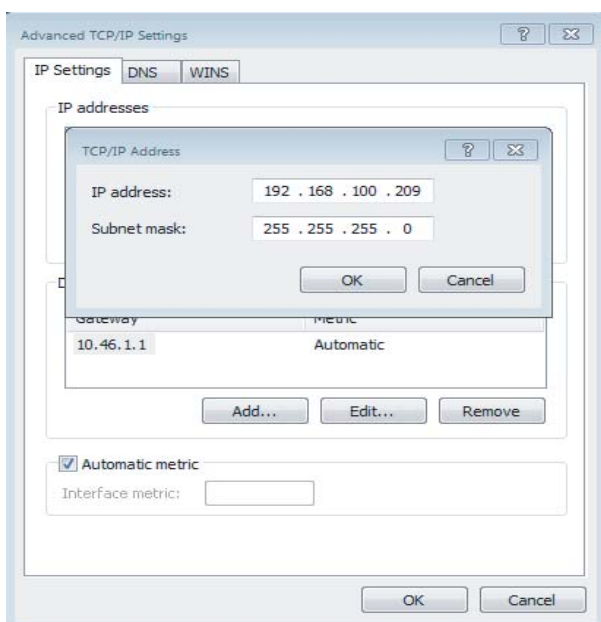


Fig.3.2

Click “Add” in IP address bar to add an IP address which is in the same segment as “192.168.1.200”, e.g., IP: 192.168.1.209, subnet mask 255.255.255.0, and click “OK”

## 3.2 Configuration

Input http://192.168.1.200 in the address bar in IE (suggest to use IE). Choose “Configuration” when web page of modbus gateway displays, as shown below:

Modbus Address	1
Modbus Commu. Setting	9600 None-无校验
IP Address	192.168.1.200
Netmask	255.255.255.0
Gateway	192.168.1.1
Outlet Baudrate	600

if outlet baudrate is 600, then support outlet(0~3), in  
 if outlet baudrate is 4800, then support outlet(0~3), in  
 Get Setting successful!

Fig.3.3

Parameters Setting:

Parameter	Description
Modbus address	Modbus ID, to distinguish modbus gateway with multiple Modbus protocols in the same subnet. Don't repeat the address.
Modbus communication setting	Baud rate: suggest 9600; Check bit: no checking by default Stop bit: 1StopBit by default
IP address	IP address of modbus gateway, multiple IPs can't be the same.
Subnet Mask	Default: 255.255.255.0
Gateway	Local gateway address
Baud rate of the outdoor unit	Outdoor communication baud rate which is connected to modbus gateway

Click “Application Settings” after changing the corresponding parameters. Click “Get Settings” when apply the new settings. Modbus gateway will restart automatically after changing settings, the network will break and reconnect.



### 3.3 Air Conditioner Information Query

Choose "power winding" or "input register" in the web page to read information of the air conditioner unit.

When choose "power winding" it will be like the picture below.

Coil Outputs				Input Registers								Airconditione			
0	1	2	3	4	5	6	7	8	9	10	11	12			
20	21	22	23	24	25	26	27	28	29	30	31	32			
40	41	42	43	44	45	46	47	48	49	50	51	52			
60	61	62	63	Indoor#0:COOL-MODE								Outle			

1	FAN-MODE	<input type="radio"/>	28	Change Aire	<input type="radio"/>
2	DEHUMM-MODE	<input type="radio"/>	29	Cleaner	<input type="radio"/>
3	HEAT-MODE	<input type="radio"/>	30	Humad	<input type="radio"/>
4	COOL-MODE	<input checked="" type="radio"/>	31	Add Oxygen	<input type="radio"/>
5	AUTO-MODE	<input type="radio"/>	32	Dryer	<input type="radio"/>
6	MODE-LOCK	<input type="radio"/>	33	Horizontal Sway	<input type="radio"/>
7	--	<input type="radio"/>	34	Add Water	<input type="radio"/>
8	ON/OFF	<input checked="" type="radio"/>	35	Pump	<input checked="" type="radio"/>
9	HIGH-FAN	<input checked="" type="radio"/>	36	--	<input type="radio"/>
10	MEDIUM-FAN	<input type="radio"/>	37	LOCK COOL	<input type="radio"/>
11	LOW-FAN	<input type="radio"/>	38	LOCK HEAT	<input type="radio"/>
12	BREEZE-FAN	<input type="radio"/>	39	LOCK-CENTER-CTRL	<input type="radio"/>
13	--	<input type="radio"/>	40	LOCK-REMOTE-CTRL	<input type="radio"/>
14	--	<input type="radio"/>	41	E0 Phase Error	<input type="radio"/>
15	--	<input type="radio"/>	42	E1 Commu. Error	<input type="radio"/>
16	AUTO-FAN	<input type="radio"/>	43	E2 T1 Sensor Error	<input type="radio"/>
17	--	<input type="radio"/>	44	E3 T2A Sensor Error	<input type="radio"/>

Fig.3.4

When click the address number of the indoor or outdoor unit, it will show corresponding operation information of the air conditioner. The chosen device will display in the red frame.

When click "input register", the interface will be like this:

Coil Outputs				Input Registers					Aircondit			
0	1	2	3	4	5	6	7	8	9	10	11	12
20	21	22	23	24	25	26	27	28	29	30	31	32
40	41	42	43	44	45	46	47	48	49	50	51	52
60	61	62	63	Indoor#0:COOL-MODE								0
30001	SystemStatus					0/0000			30017			
30002	UnitStyle-1					224/00E0			30018	OUTL		
30003	UnitStyle-2					20/0014			30019	AC		
30004	SET TEMP. Ts					17/0011			30020	AC1		
30005	ROOM TEMP. T1					90/005A			30021	AC2		
30006	EVAPORATOR-TEMP. T2A					90/005A			30022	AC4		
30007	EVAPORATOR-TEMP. T2B					90/005A			30023	OUTL		
30008	CONDENSER TEMP. T3					255/00FF			30024	OU		
30009	--					0/0000			30025	AC		
30010	--					0/0000			30026	AC		
30011	TIMER-ON					0/0000			30027	AC		
30012	TIMER-OFF					0/0000			30028	AC		
30013	POWER					8/0008			30029	A		
30014	--					0/0000			30030	A		
30015	--					0/0000			30031	A		
30016	ERROR STATUS					0/0000			30032	A		

Fig.3.5

The first column is the address, second is the content and the third is displayed value, e.g. 17/0011, 17 is decimal display, 0011 is hexadecimal display.

Explanation of part of the content:

E.g., outdoor unit on-line state: 1/0001. When No. 0 outdoor unit is on-line, its value is 1/0001(decimalism / hexadecimal ), when No.0 outdoor and No. 1 outdoor unit are on-line, its value is 3/0003.

Air Conditioner Control

When click "Air Conditioner Control" on the web page, it will display like this:

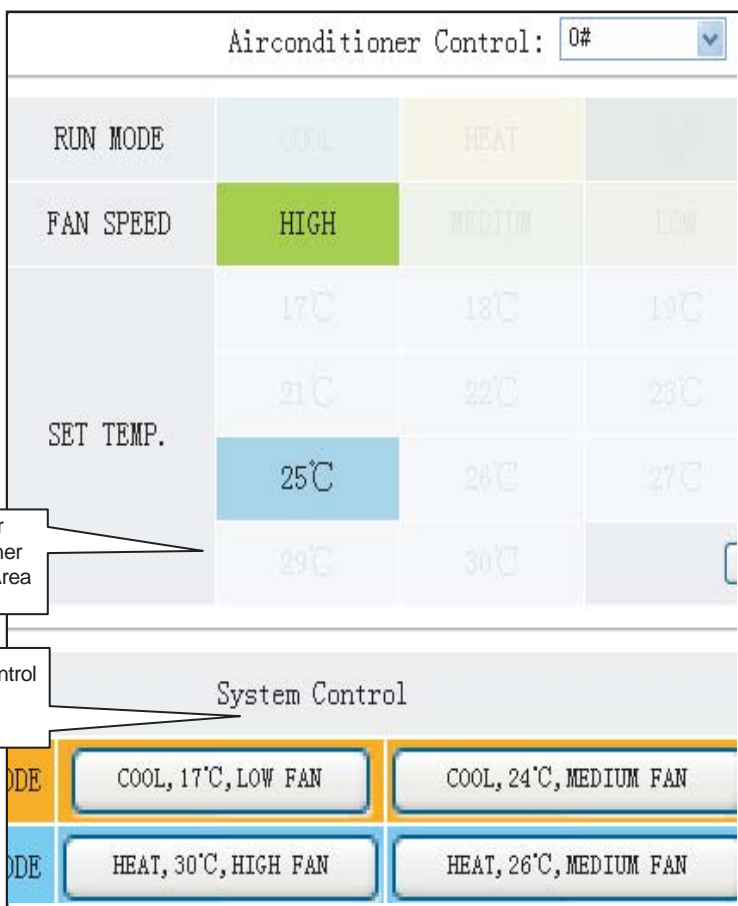


Fig.3.6

Single air conditioner control area: control the single air conditioner. Choose a single air conditioner and set mode, wind speed and temperature.

Single control area: to choose a single air conditioner, set mode, wind speed, temperature and click "Apply" to carry out a single controlling function.

Group control area: to choose the corresponding group control button and carry out group controlling. All the indoor units under the control of modbus gateway carry out this operation.

## 3.4 Upper Computer Access

### 3.4.1 Upper Computer Access Mode

Upper computer system with Modbus protocol port can communicate with modbus gateway through Modbus TCP or Modbus RTU. For detailed information, please refer to Fig .2.2 and Fig. 2.3.

### 3.4.2 Access to Debug

Via Modbus Poll software to access debugging. Here is the debug procedure:

#### 3.4.2.1 Install Modbus Poll software

When finish installing Modbus Poll software, the home page will display like this:

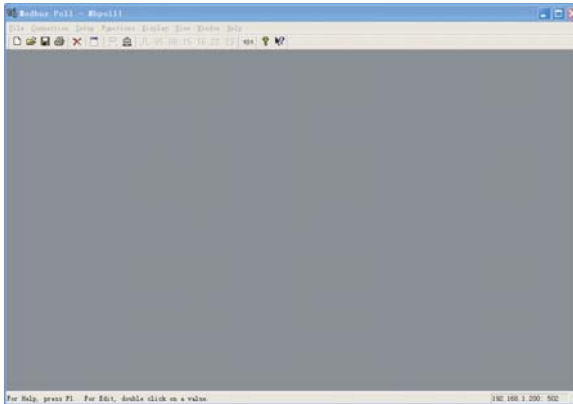


Fig.3.7

#### 3.4.2.2 Connect Modbus Gateway

There're 2 connection ways: Modbus TCP and Modbus RTU

1)Choose "Connection"->"Connection" in figure 3.7,and then chose TCP/IP in the pop-up window:

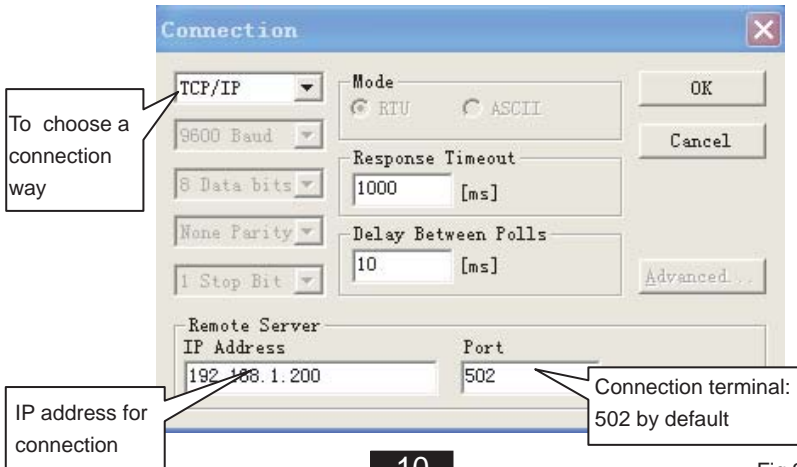


Fig.3.8

Click "OK" when finish setting.

## 2) Connection through Modbus/RTU

Choose RTU to connect, as shown below:

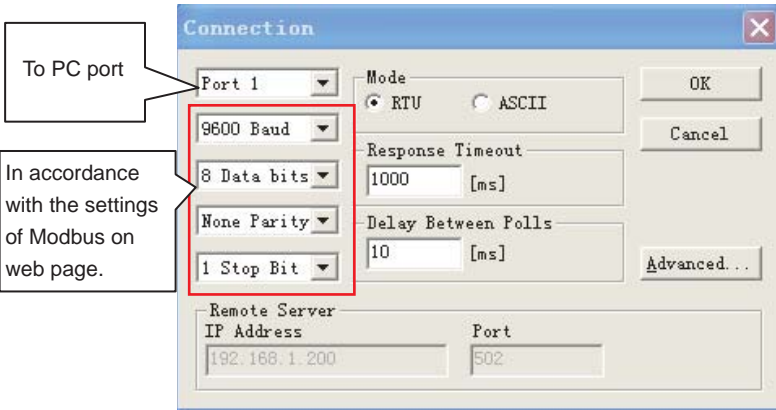


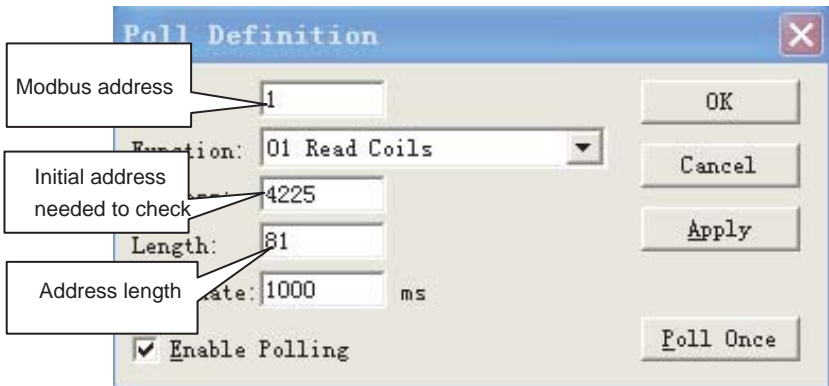
Fig.3.9

### 3.4.2.3 Test

Modbus Poll software can read/write the content of corresponding address in mapping table.

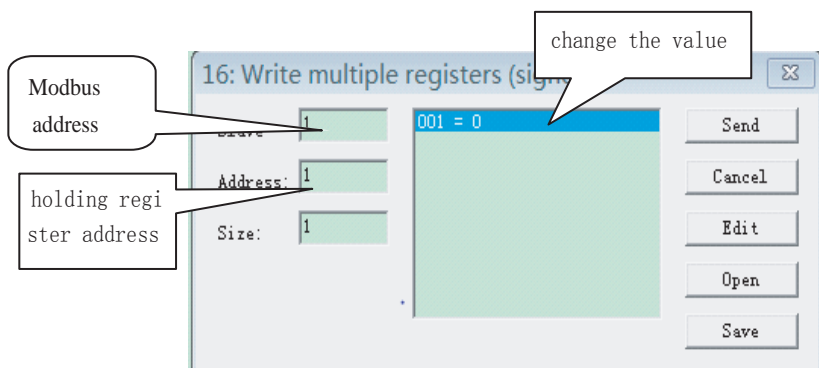
Take reading coil content for an example:

Choose "Poll Definition" under "Setup"



Click the "OK" button and it will display the content. If the content is the same as the value of the web page which has the same address, it means that the software debugging success.

Take writing holding register for example:  
Choose button 16 in Fig.3.7,as shown below:



After changed the value,click "send" button to finish the writing operation.

## 4 Software Reset

Press "RESET" button on the gateway for 3 seconds and power on again, the software configuration will be back to the original setting.

## 5 Appendix 《Mapping Table》



## **Take-back of electrical waste Information for Users to Disposal of electrical and electronic equipment (private households)**

Icon on the product or in the accompanying documentation means that used electric or electronic products must not be disposed together with domestic waste. For the correct disposal of the product hand it over to a place for take-back, where it is collected free of charge. By correct disposal of the product you can help to preserve valuable natural resources and help in preventing potential negative impacts to environment and human health, which could be consequence of incorrect disposal of waste. Ask for more details from local authorities, nearest collection point, in Waste Acts of respective country, in the Czech Republic in Act no. 185/2001 Coll., in the wording of later regulations. In case of incorrect disposal of this waste, a fine can be imposed according to national regulations.



### **Manufacturer:**

**Sinclair Corporation Ltd., 1-4 Argyll Street,  
London W1F 7LD, UK**

### **Supplier and technical support:**

**Nepa, spol.s.r.o.**

**Purkyňova 45**

**612 00 Brno**

**Czech Republic**

**[www.nepa.cz](http://www.nepa.cz)**

### **Toll-free info line:**

**+420 800 100 285**